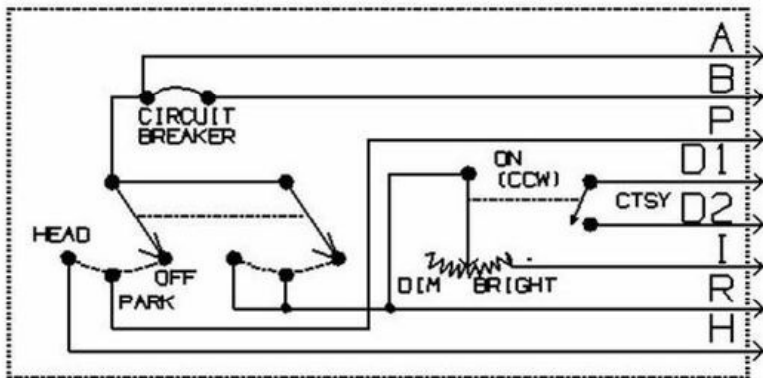
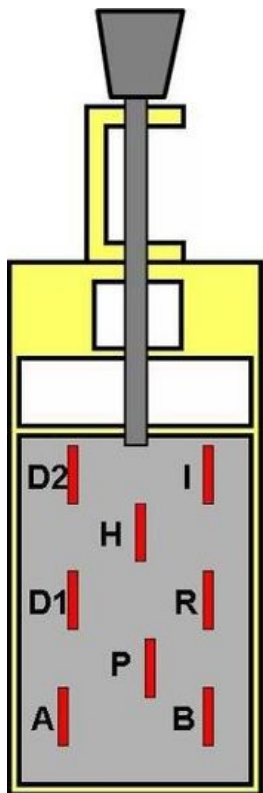




INTELLIGENT MULTIPLEX SYSTEM

Mustang Headlight Switch Input Wiring

- | | |
|---------------------------------|----------------|
| B - Battery Feed | Blk/Org |
| R - Tail Lamps | Blk |
| I - Dash Ind (thru fuse) | Blu/Red |
| P - Front Park Lamps | Blk/Yel |
| H - Headlights | Red/Yel |
| A - Brake Switch Feed | Grn/Red |
| D1 - Courtesy Lamp Fuse | Grn/Yel |
| D2 - Courtesy Lamps | Blk/Blu |



- Terminal A
 - MASTERCELL ground
 - Black wire
- Terminal R
 - Parking light input
 - Input 6
 - Blue wire, Black tracer
- Terminal H
 - Headlight input
 - Input 5
 - White wire, Green tracer